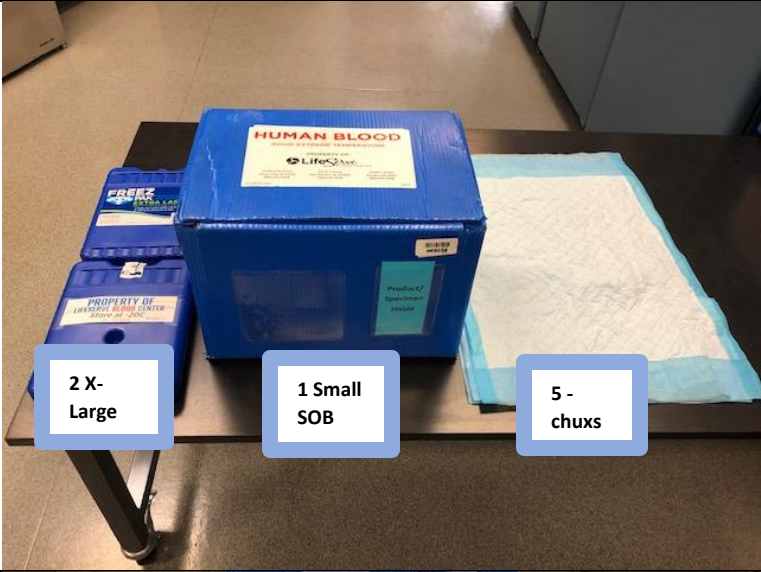



Packing Small 1-12 Units – Visual Work Tool

Packing Small Special-Order Boxes (SOB) ---- 1-12 Units	
Action: Collect supplies needed to pack small SOB box.	Picture:  <p>The image shows three items on a table. On the left are two large blue boxes labeled '2 X-Large'. In the center is a smaller blue box labeled '1 Small SOB'. On the right is a stack of five white paper chuxes labeled '5 - chuxs'. The SOB box has a label that reads 'HUMAN BLOOD' and 'LIFE SERVE BLOOD CENTER'.</p>
Open Small SOB and remove Styrofoam lid and pull out the plastic liner.	 <p>The image shows the interior of the small SOB box. The lid has been removed, and a blue plastic liner is being pulled out. A blue arrow points to the liner with the text 'Plastic Liner'. The box contains a white paper chux.</p>

Take 2 X-large block ice. Wrap each block ice in 2 chuxs. Start wrapping at one end and go to other end and tuck the flaps under the block ice.



Place one block ice on each end of the small SOB.

Note: try and keep the flaps toward the box.



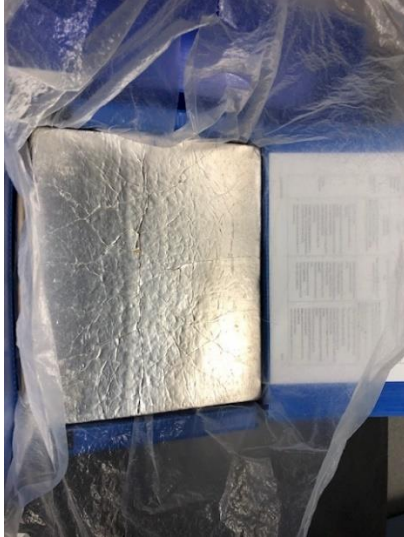
Place red blood cell into the bottom of the small SOB.



Place 1 chux on top of the red blood cells.



Place the Styrofoam lid in position and close the plastic liner on top of the lid.



Close the small SOB lid,
and seal the Velcro.

