

WHY DONATE WITH LIFESERVE BLOOD CENTER?



YOUR BLOOD.

The strength of our community blood supply is dependent on **local donors**, businesses, and organizations that donate and sponsor blood drives **with LifeServe Blood Center.**



LifeServe Blood Center is a non-profit community-based blood center.

YOUR HOSPITAL.



100% of the blood products needed by LifeServe hospitals will come from communities like yours and donors like you.



YOUR NEIGHBORS.

Only blood collected by LifeServe Blood Center is provided to **OUR local** hospital partners.

What Sets LifeServe Apart?

“My momma received blood today thank you from the bottom of my heart! You are a wonderful human.”

Local hospital patients are now able to **thank our blood donors** for their generous blood donation!

Learn more at lifeserve.info/ttd



“Thank you, your donation will help my father bounce back from chemotherapy which sucks the life out of him. You have breathed new life and energy. Thank you”

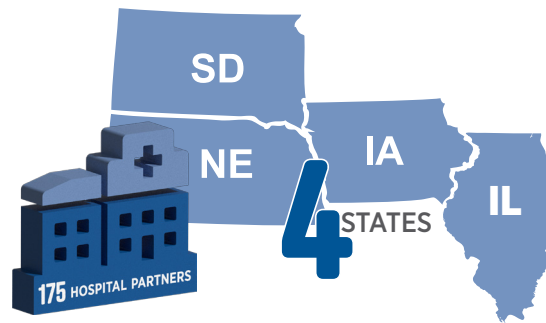
FIRST TIME

DONOR GIFT!



High School and Student Recognition Opportunities

Students who host their own blood drive OR schools that host two drives a year are eligible for our scholarship program!



LifeServe is not affiliated with the American Red Cross, ImpactLife, or for-profit plasma centers.



To ensure blood donors in the community continue to support their local hospital, LifeServe will honor any blood donors current donation and gallon level milestones. Blood donors also earn online store reward points after donation.



A non-invasive, painless way to check hemoglobin levels for blood donors during the donation process.



LifeServe
BLOOD CENTER

YOUR BLOOD. YOUR HOSPITAL. YOUR NEIGHBORS.

YOUR LEGACY OF SAVING LIVES MATTERS, AND IT COMES WITH YOU!

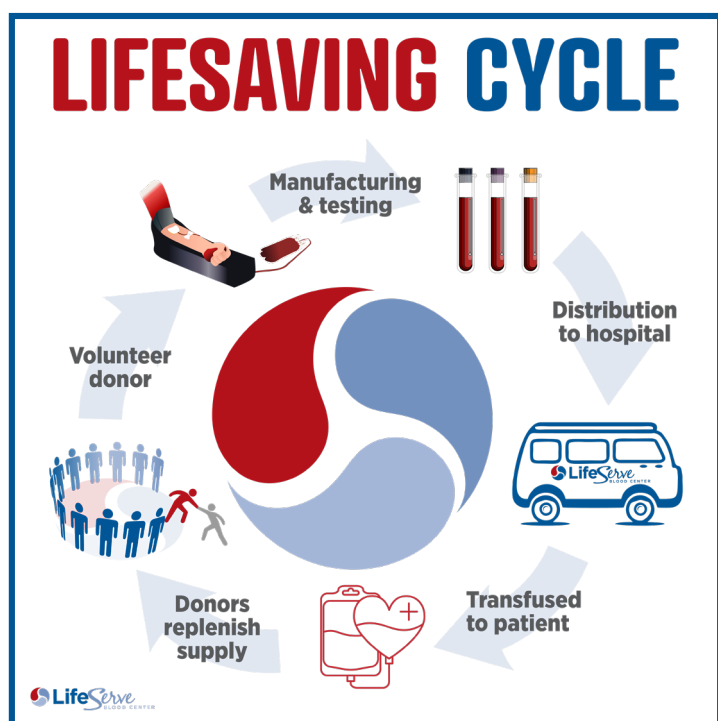
Have you been a dedicated blood donor with another blood center? Your incredible contributions don't need to stay behind.

At LifeServe Blood Center, we believe every drop counts, and every donor journey matters. That's why we're proud to offer an easy way for you to transfer your donation accomplishments, including your gallon milestones and total donation count, to LifeServe.

Whether you've donated once or one hundred times, we want to make sure your lifesaving impact is counted and celebrated. By transferring your records, your full donor history will be reflected in your LifeServe profile, helping you track your milestones, earn recognition, and see how many lives you've helped save throughout your donation journey.

Because when you give blood, you're giving more than a pint, you're giving part of your story. And we want that story to continue with LifeServe.

Your blood. Your community. Your legacy.

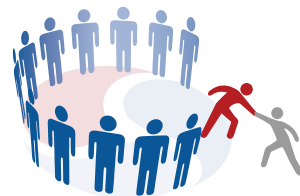


What Sets LifeServe Apart?

- Community based blood centers (like LifeServe) are unique in that they only collect blood in the territories or counties where they provide blood to the local hospitals.
- We strive to be good stewards of the blood supply. If locally donated blood products are not needed, we will seek out other blood centers who may be in need.
- From blood donors, blood drive chairpeople to volunteers, LifeServe Blood Center relies on the generosity of individuals looking to make a difference in your neighborhood!
- When donors donate with another blood collection organization within our community, their local donation does not support your local hospital. **Only blood collected by LifeServe Blood Center is provided to local hospitals.**
- We ONLY collect blood in areas where we serve the local hospital or the surrounding hospital.

WHO IS LIFESERVE BLOOD CENTER?

LifeServe Blood Center is your non-profit, community-based blood center that has served the needs of local hospitals and patients in our regions since 1947. As one of the 15 largest blood centers in the country, LifeServe Blood Center is the SOLE provider of blood and blood products to 175 hospitals primarily located in Iowa, South Dakota, Nebraska, and Illinois



WHY IS LIFESERVE THE NEW SOLE PROVIDER OF BLOOD & BLOOD PRODUCTS?



Hospitals choose which blood collection organization they want to receive blood products from. They base that decision on service, quality, reputation, and accessibility of products. Hospitals in your area chose LifeServe Blood Center to be their sole provider of blood and blood products to ensure the best possible patient care and a safe and stable community blood supply.

WHY IS IT IMPORTANT TO DONATE BLOOD WITH LIFESERVE?

LifeServe Blood Center provides blood and blood products to 175 hospitals primarily in Iowa, South Dakota, Nebraska, and Illinois. As a community blood center, we count on area residents to donate blood with LifeServe so that we can maintain a safe and stable community blood supply for your local hospital.

WHAT IS LIFESERVE'S FOOTPRINT?

LifeServe has 340 team members across four states with 16 locations, 14 donor centers, seven blood distribution locations from which blood is provided to hospitals, four different laboratory locations and multiple mobile blood drive units and buses.

HOW CAN THE COMMUNITY SUPPORT THEIR LOCAL BLOOD SUPPLY?

Did you know that 62% of people are eligible to donate blood but only 3% actually give? You can be the change and be a community partner to host blood drives and recruit blood donors. The strength of our community blood supply is dependent on local donors, businesses, and organizations that donate and sponsor blood drives with LifeServe Blood Center. We need community partners to host blood drives and recruit blood donors to directly support their community blood supply. LifeServe partners with schools, civic organizations, and more.



5625 NW Johnston Drive | Johnston, Iowa 50131 | 800.287.4903 | lifeservebloodcenter.org